

# ACLS



# NEWSLETTER

## ASSOCIATION OF CONSULTANTS FOR LITURGICAL SPACE

**Upcoming ACLS Activities**  
 Please join us at:  
 2018 ACLS Retreat at Lake Geneva, Wisconsin  
 June 25-28, 2018

### Upcoming Events

#### WEBINAR:

April 17 1 PM ET

Peter Hayes, of  
Meltdown Glass The r

### ACLS Retreat - June 25-28, 2018

#### ACLS Trip to see

Passion of Christ  
Play:  
Oberammergau  
2020

## 2018 ACLS Retreat

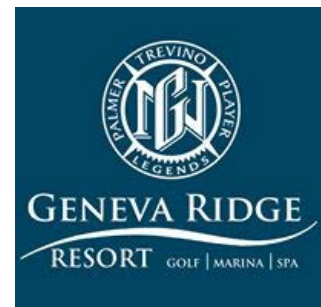
**at Lake Geneva with John Buscemi.**

**We have room for a couple more people! Contact Robert Habiger ASAP!!!**

The ACLS Board is planning a Retreat for June 25 – 28, 2018. The purpose of the retreat is to strengthen ACLS as an organization, facilitate camaraderie among members, and conduct educational and inspirational learning opportunities.

The Retreat will be held at The Ridge in Lake Geneva Wisconsin. Lake Geneva is located in southeastern Wisconsin in a resort area known for its beautiful lakes and scenery. We have chosen the location in Wisconsin to accommodate the participation of John Buscemi in the retreat. John is one of the leaders instrumental in the liturgical renewal movement of the latter part of the last century, in liturgical consulting and in the formation of the ACLS. John will be a facilitator for the retreat. We are pleased he is interested to be a part of the event!

Attendees would arrive on Monday, June 25th. We will hold workshops throughout Tuesday and Wednesday of that week. There will also be a banquet one of the evenings of the retreat. Attendees would leave to travel back home on Thursday, June 28th.



## Website Photos

We need your help!

Our website is a wonderful resource for people in need of our services! The photos on it are exquisite and serve as a great catalogue for our work. Please continue to add new photos of your projects, not only will they be on the website, but now we are pinning them on Pinterest and Facebook. Take advantage of ACLS promoting you! When you do add your photos make sure you are renaming the slides with your information, not the image number.

**Send your Member News to be included in the next Newsletter!**

The Ridge in Lake Geneva is 90 minutes (75 miles) from O'Hare International Airport, 60 minutes (50 miles) from Mitchell Airport in Milwaukee, and 90 minutes (80 miles) from Dane County Regional Airport near Madison, WI. Attendees can likely find opportunities to carpool from airports with other attendees.

We are asking members to commit to the ACLS Retreat by paying registration fee of \$125. This commitment covers the costs of the overhead expenses associated with the Retreat, scheduled snack breaks during the retreat, and the banquet.

Attendees will be responsible for covering costs of rooms directly with The Ridge in Lake Geneva upon arrival at the retreat. The projected cost for the room rental at the Ridge is: \$444 for single room occupancy (total for three nights) and \$222 for a shared room occupancy (total for three nights).

Travel costs to Lake Geneva and the cost of meals other than snack breaks and the banquet, are not included in the cost projections. Attendees will be responsible for covering costs of rooms directly with The Ridge in Lake Geneva upon arrival at the retreat.

Following receipt of commitments by attendees, the ACLS Board will reserve the meeting spaces and rooms necessary for the attendees who have registered. It is important that we are able to reserve the right number of rooms early in March. The Ridge will fill for the summer months and we want to be able to provide rooms at the Ridge for attendees at a reasonable rate.

If you are interested in attending the ACLS Retreat, please provide the registration fee in the amount of \$125 asap. Please also indicate if you would like to have a single or double occupancy at the retreat. To pay the registration fee and reserve your spot use the PayPal link below.

### **VERY IMPORTANT**

If you plan to attend but not sending the payment today, please send an email ASAP to Robert Habiger @ [TreasurerACLS@gmail.com](mailto:TreasurerACLS@gmail.com). I will send you an invoice from our PayPal account for the registration cost. Alternately you may let Robert know by email that you will be forwarding a check to him at ACLS Treasurer, 2101 Valencia Dr NE, Albuquerque, NM 87110.

Following receipt of deposits, we will follow-up with confirmation of the retreat and additional information to those who have registered.

## Member News



Paul Barribeau and Robert Habiger recently completed a project they worked together on with fellow ACLS members Johannes Albl, Cindy Kessler and Jordan Wanner serving in artistic capacities.



After a fire destroyed their century old church building, First Lutheran Church in Lorain Ohio decided to remain in the area on a nearby, larger site. The former worship was within a multi-level, inaccessible building built in the 1930's. A congregation known for its outreach and creative worship, the church committed to design a new worship to encourage hospitality and outreach as well as celebrate liturgical excellence.

Robert Habiger, Paul Barribeau with Mike McGraw of Groth Design Group

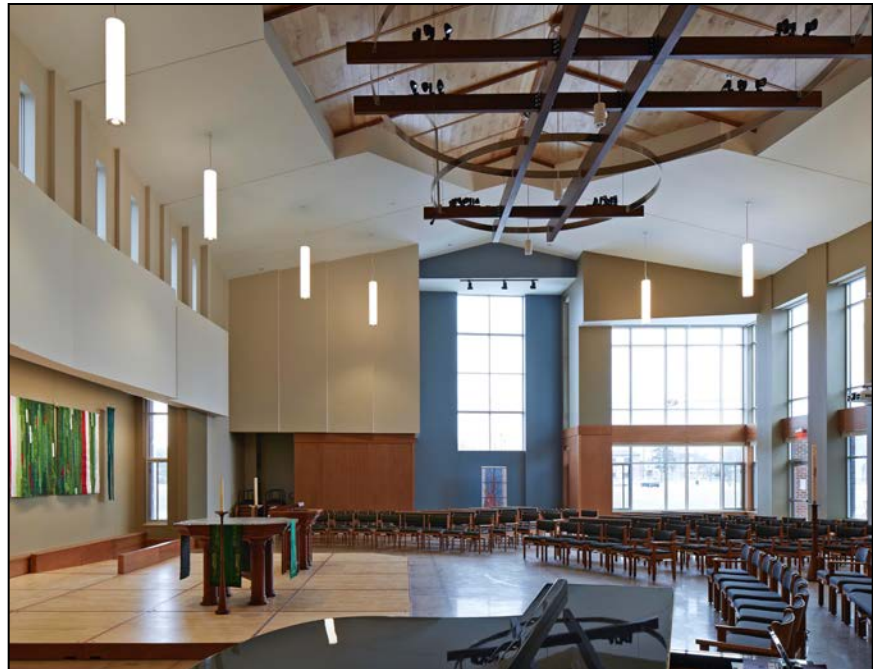
## Architectural Design Statement:

From the start of design, three components of the project were understood as necessary for success:

*Invitation:* As a church whose core ministry is outreach, the building had to be invitational to the outside community. The former worship was neither physically accessible nor visually transparent. The congregation voiced the desire to extend physical access and visual welcome to the surrounding city.

*Intimacy:* While the new worship needed to occasionally seat 300 people, the typical seating would be under 200 people. The purchase of massive pipe organ, required by insurance moneys, dictated an overwhelming volume for such small seating. The volume had the potential to overwhelm the small footprint and eliminate for human intimacy within the space.

*Flexibility:* The congregation desired a space that would allow multiple layouts, both small, intimate and devotional, as well as larger, expansive and communal. Some layouts needed to be centric, others linear.

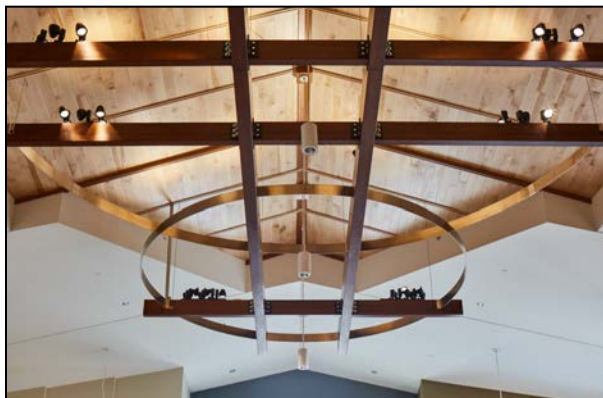


## Solutions

The worship area is situated on the site so that one of the corners near a major street could erode with a substantial, glass portal. This opening invites the surrounding community visually into the worship and reminds the worshipping community that their mission is in the world outside.

While the ends of the volume are articulated vertically to compliment the height of the future organ (the instrument will not be finished until 2020.), the side walls striate horizontally to lessen the impact of scale of the space. The striations also afford the opportunity to provide suitable areas for artwork, screen and sound technologies and windows.

The altar platform is fully moveable amid flexible seating. This fluidity allows varying sized celebrations to configure with more or less generous spacing of seating, so that the space always feels comfortably filled. Less mobile features such as the organ, sound system, projection screens and flowing font were carefully placed for permanent usefulness even with the various seating arrangements.



A massive lattice structure floats within the volume. Its purpose is two-fold. Without diminishing the volume's acoustic potential, the framework visually reduces the scale of the space so the worshipper is not overwhelmed. Additionally, the lattice provides a framework for flexible spot-lighting over the ever-changing configurations of liturgical furnishings.

By Paul Barribeau





Architectural  
Design:  
Paul Barribeau  
Groth Design  
Group



All Photos by  
Josh Groth.

### Liturgical Design Statement:

At the project's beginning a purpose statement was inscribed to guide the design team. It read: *"The worship space will glorify God and emphasize the central things of Lutheran Liturgy: people, altar, pulpit, and font and will be beautiful, inviting, inspiring, flexible, comfortable and timeless. The new worship space will be tailored to enhance our tradition of good music by its acoustics and*

*the instruments it includes. We will have a worship space that is built on the heritage of the past, appeals to the current congregation, is appropriate to the size of our worshipping community and has the flexibility to serve the needs of future generations."*

The final design of the worship environment reflects this desire to create a flexible yet distinctive worship environment. Permanent building elements include the (future) tracker organ, choir risers, and baptismal font. All other elements such as seating, platforms, and liturgical furniture are movable. Some congregation members questioned the need for so much flexibility primarily because they had no experience with this type of space and were concerned it might make it be too contemporary. Because the congregation met in a temporary space during the planning and design period they had the opportunity to experience all the proposed seating arrangements. This convinced the leadership team of the liturgical importance to have a space that can adapt to each liturgical season or church function.

The worship space has no clearly defined front of back but forms a unified-harmonious space that embraces everyone. The design is both contemporary and traditional while remaining completely flexible. Six (6) seating-liturgical furniture layouts are obtainable for Sunday worship. These room changes offer the opportunity to immerse the community into the liturgical season itself. For example, the circular, antiphonal or oval arrangements help to create community intimacy at Advent and Easter, while the processional and semi-circular arrangements allow isolation and personal introspection at Lent. Within the worship environment provision for both permanent and seasonal art have been accommodated.

For ministers to work with such a flexible space the liturgical furniture had to be easily moved. At the same time the designs needed to provide a sense of the sacred and not be too light, visually. The altar and pulpit use wood carving and intricate wood trim detailing to establish this special look and encounter with the sacred as well as convey a connection to past, present and future. Designed as stand-alone pieces, the altar and pulpit become art elements that are central to the worshipping experience.

The altar table is square in plan to represent that there is no front or back and that the table is accessible to everyone from all sides. The design resembles a table so as to reinforce the nature of Eucharist as meal. The pulpit creates a liturgical center like the altar table. Designed as a reading desk the pulpit expresses the authority and centrality of the word of God. The bookrest can raise and lower to accommodate people with different abilities.

The font is placed to be the first object a person encounters upon entering the Worship Environment. A large bronze basin rises from the floor with abundant water overflowing down its sides into a below-floor reservoir. Water is accessible and visible. ACLS member Jordan Wanner of Wanner Sculpture Studio designed and cast the font.

The liturgical furniture is made from African Mahogany with minor Maple accents to blend with the building's architecture. Another ACLS member Johannes Albl of Albl Oberammergau GbR was the furniture fabricator.

Not depicted yet in the photographs are future stained-art glass windows. ACLS member Cindy Kessler of Kessler Studios, Inc has designed and is in production for the future art glass installations at the large south middle window and several smaller east windows of the worship environment.

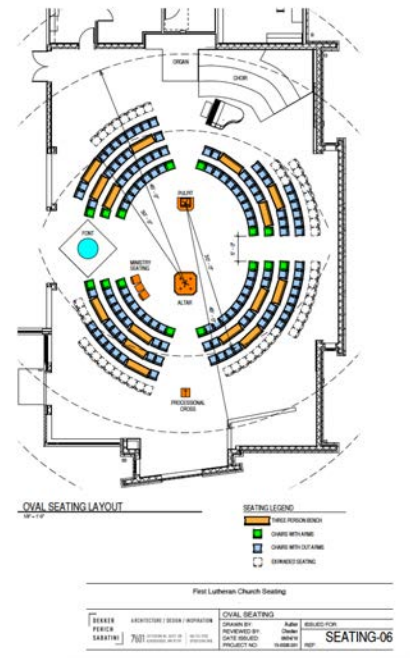
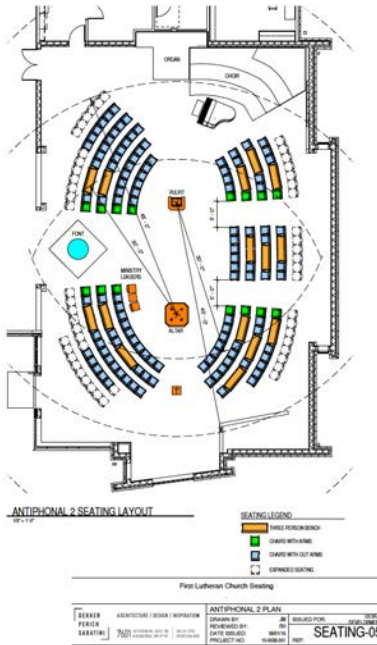
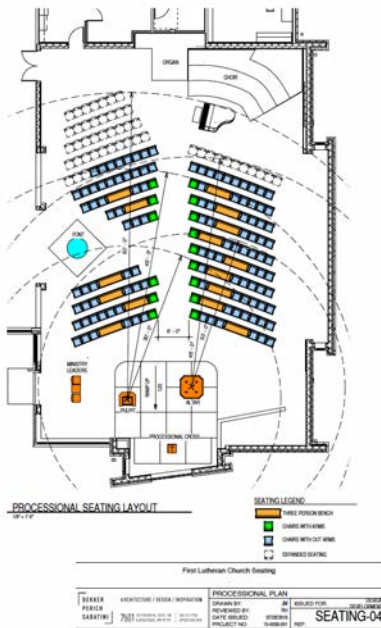
An important design feature is the Gathering / Narthex space. The gathering room is designed to invite all people to the church. Exterior access to this hospitality zone is available from both the main parking lot and from a street entrance through a meditation garden. Internally the gathering room is a centralized space that provides access to the worship environment, offices, fellowship hall, ministry outreach rooms, and the education wing. It is a transitional space that builds a sense of community, facilitates hospitality, and sends forth the assembly into the world. The design of the gathering room is keeping with the conviction that all people are welcomed to this place. At the south end of the room overlooking the outdoor meditation garden is a full height glass wall. This transparent wall allows passersby to view into the church building reinforcing the notion that everyone is welcomed to enter. At the inside, centered on the glass wall, is a floor mounted cross. The cross is sized for maximum visibility and presence so as to greet each person who enters and to emphatically state that this is a house of prayer.



Liturgical Design Consulting & Liturgical Furniture Design  
 First Lutheran Church  
 Lorain, Ohio By: Robert Habiger



From





Carol Frenning

*ACLS Letter from the President*

*Today I wanted to begin this letter from the president with a joyful note of Easter Blessings. This is a very difficult thing to do. Outside the window I can see a world that looks like a snow globe after it has been turned upside down. We are expecting 6 to 8 inches of fluffy white stuff before this ends tomorrow evening. Such is spring in Minnesota. We all know that it will not last long and that the early pasque flower will be poking its blossom through this snow – a sure sign of things to come.*

*It is the things to come that I wanted to write to all of you about for this newsletter. The most important upcoming event for ACLS members is the retreat we have planned for June 25 to 28. It will be held at the Ridge in Lake Geneva, Wisconsin and we are still holding a few places for last minute registrations. (You can register through the website.)*

*Over twenty years ago many of us who were just beginning our work with sacred spaces attended a retreat at the Cenacle in Chicago. I mention this because it was a seminal experience for all of us. It is one that we refer back to in our conversations at conferences and meetings when we are each telling our 'war stories' and sharing work experience. Not only was this an inspirational experience for the work we would undertake but also each of us left with a sense of renewal. And everyone commented on how much it enriched and deepened our personal spiritual life. The facilitator for this retreat was John Buscemi. With this memory in mind and our wish to share such an experience with our colleagues, the decision was easy for us to seek out John and ask him to facilitate our upcoming retreat. We are most fortunate that he has agreed to join us for what I am sure will be an extraordinary and memorable time together.*

*We began our planning with a survey of members and one of the things that came through clearly was the need for time together. So we can assure you that there will be time for sharing and critiquing of projects, discussion of burning issues topic and just plain conversation. All of this will be wrapped in the wisdom and insight that John brings. I would strongly urge anyone who has not already signed up to consider doing so quickly while we can still accommodate extra participants.*

*The Board continues our work as well in other areas such as expanding the number of conferences that will have ACLS presence. The webinars continue to be a highlight of ACLS efforts. We continue pursuing promotional areas for ACLS members and there is an ever-present push for increasing membership. On that note, please forward names of any colleagues you think could benefit from joining with ACLS to Juanita Yoder.*

*May your days be filled with Easter Joy and Blessings,  
Carol Frenning, ACLS President*